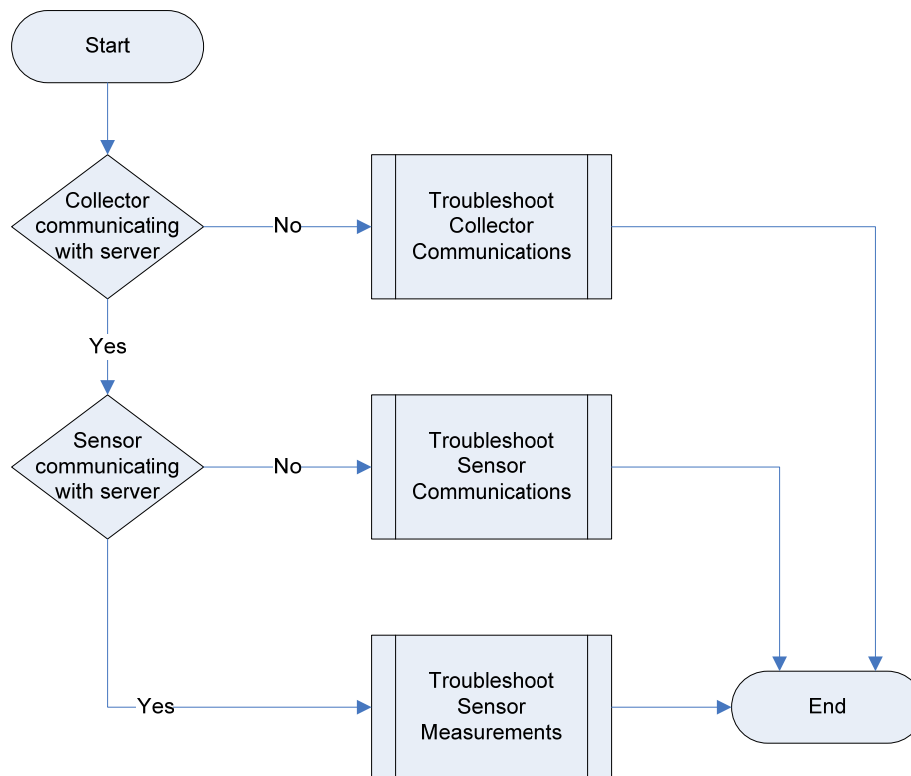


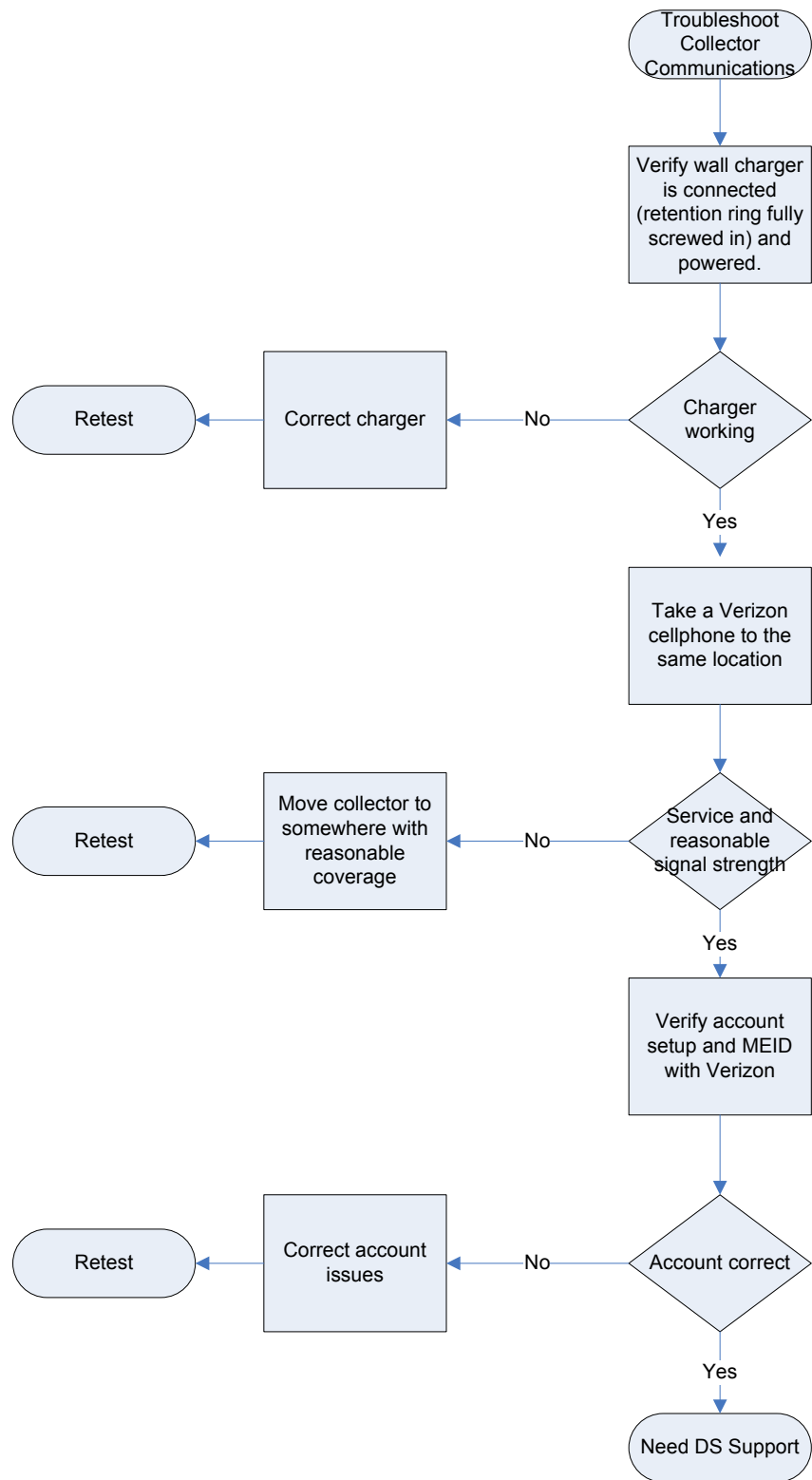
Collector/Sensor System Troubleshooting Guide

1 Overview

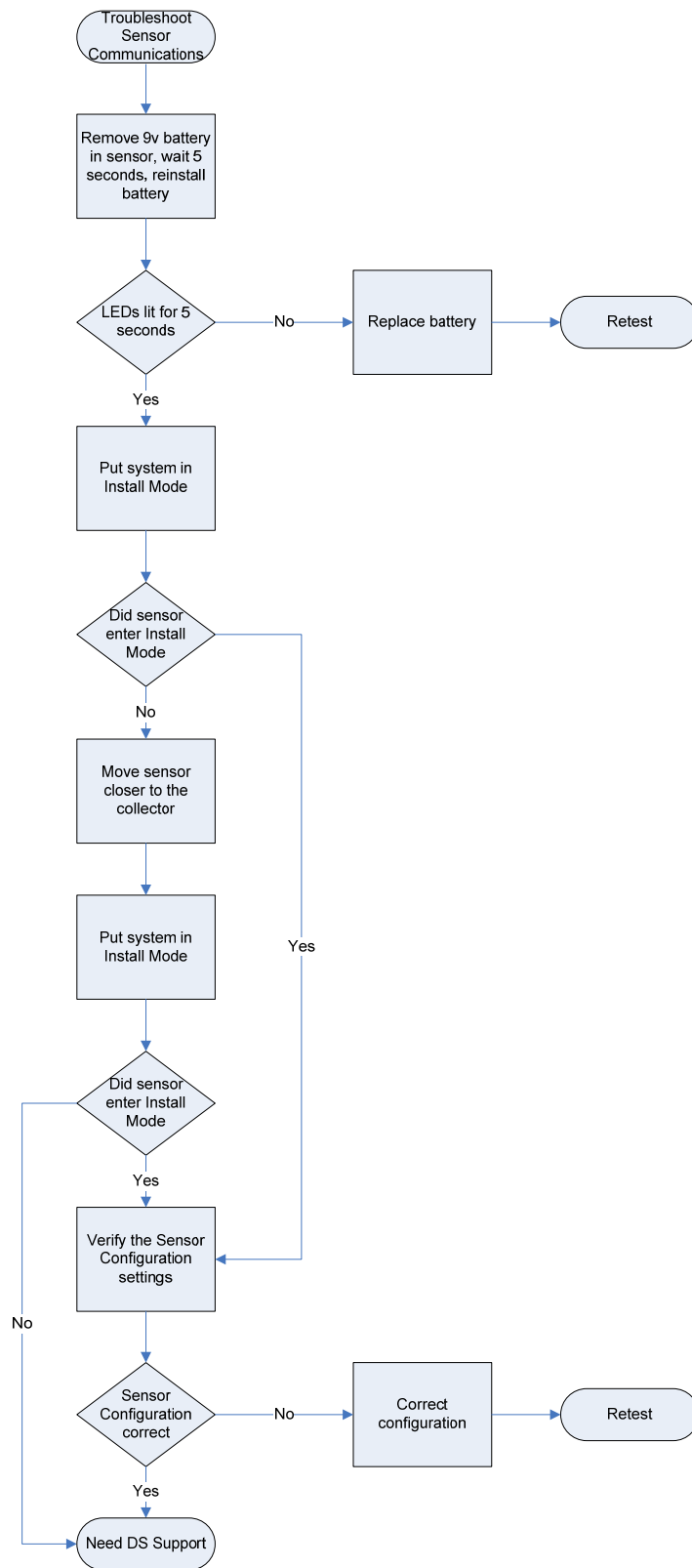
The goal of this document is to provide a brief description of the most common paths through the troubleshooting process of the Collector/Sensor system. Though not an exhaustive description of the process, this document should allow the most common problems to be diagnosed and corrected.

2 Troubleshooting

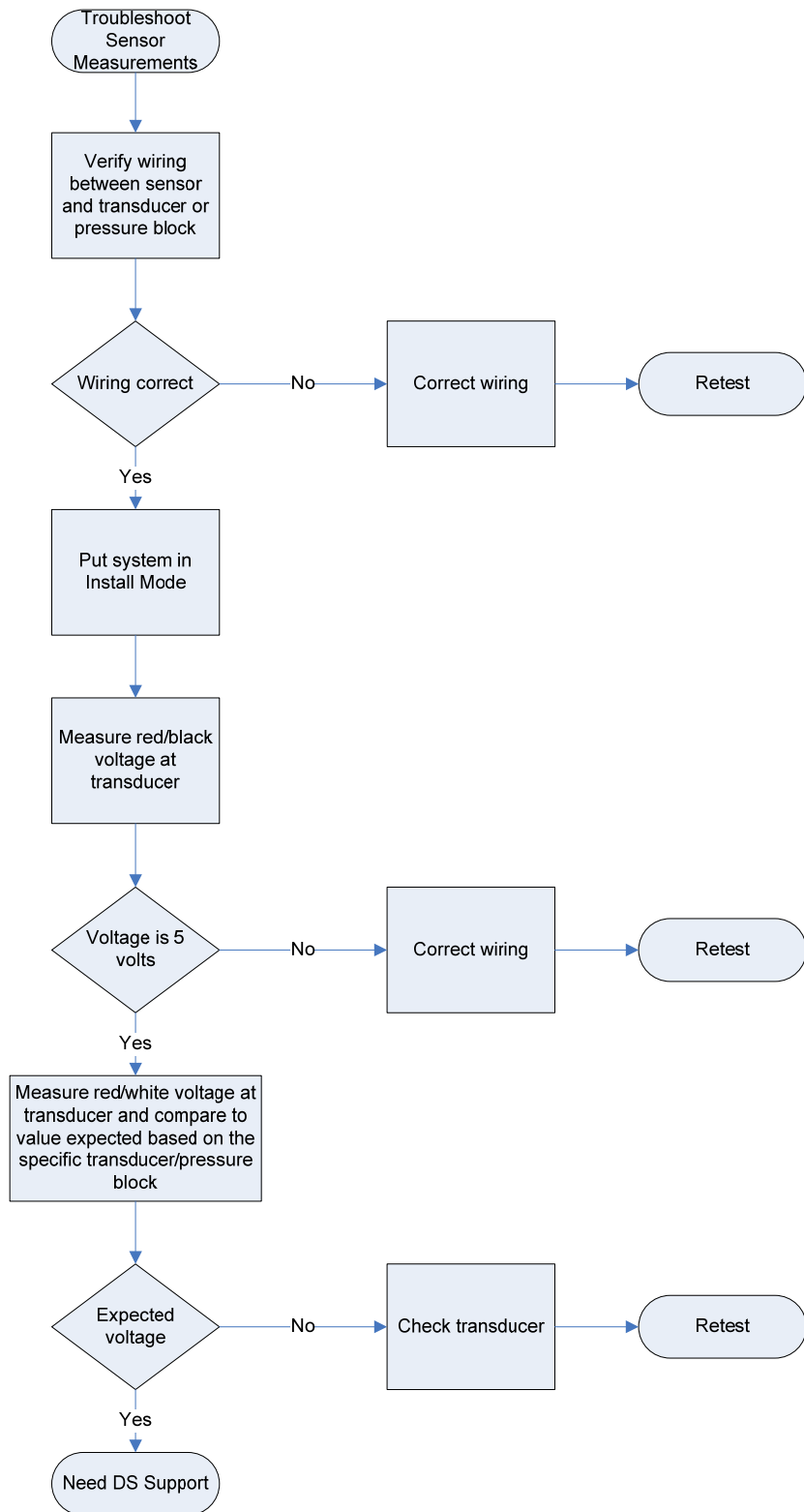




If DS Support it needed, contact Andy or Mike Ahrens



If DS Support it needed, contact Andy or Mike Ahrens



If DS Support it needed, contact Andy or Mike Ahrens